

TOTAL APPROX. FLOOR
AREA: 2865 SQ. FT.

DANIEL BREWER
Bringing People and Property Together

NOTICE: This floorplan is NOT to be used for any engineering, surveying, structural, or planning purposes. Although great care has been taken to ensure accuracy, this drawing is intended for illustrative purposes only.
The numerical values and graphical representations of the plot (not limited to) position, relative size, dimensions, areas, shape, and type of plot are intended to be approximate only - no guarantee is made as to their precision or accuracy.



Disclaimer

These particulars, whilst believed to be accurate are set out as a general outline only for guidance and do not constitute any part of an offer or contract. Intending purchasers should not rely on them as statements or representation of fact, but must satisfy themselves by inspection or otherwise as to their accuracy. We have not carried out a detailed survey nor tested the services, appliances and specific fittings. Room sizes should not be relied upon for carpets

and furnishings. The measurements given are approximate. No person in this firm's employment has the authority to make or give any representation or warranty in respect of the property.

Daniel Brewer

51 High Street
Great Dunmow
Essex, CM6 1AE

Telephone • 01371 856585
Website • www.danielbrewer.co.uk
E-mail • info@danielbrewer.co.uk

CHURCH END, BROXTED, DUNMOW, ESSEX, CM6 2BX

OFFERS OVER £900,000

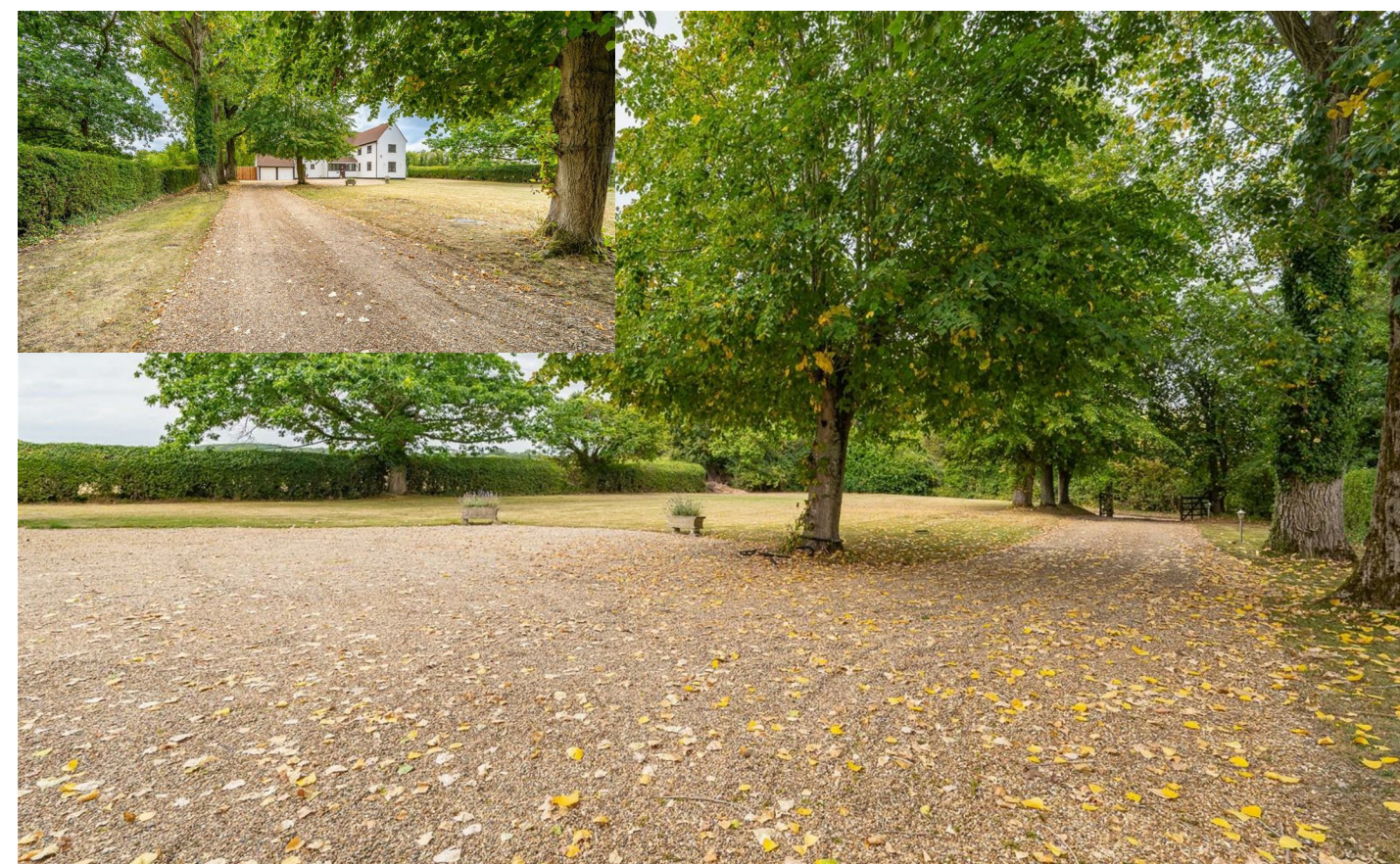
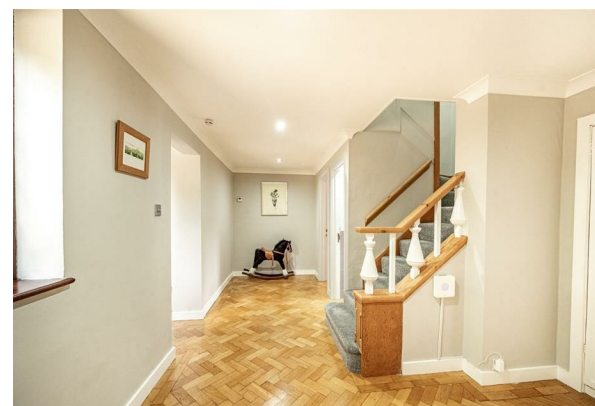


**CHURCH END
BROXTED
DUNMOW
ESSEX
CM6 2BX**

Daniel Brewer are pleased to market this substantial five bedroom detached family home located in the Essex countryside with approximately one and half acres of wraparound gardens.. This super family home offers generous living accommodation comprising:- impressive entrance hall, luxury kitchen/breakfast room, utility room, dining room, conservatory, lounge, study, inner hallway, cloakroom and a playroom. On the first floor there are five bedrooms, en-suite facilities and a bathroom. The property is situated at the end of a long tree lined gravel driveway with gated entrance and large front gardens. To the rear the property is a large formal garden laid to lawn with an adjoining orchard and grass tennis court in need of modernisation.

Surrounded by the picturesque countryside, this home not only offers a tranquil setting but also easy access to local amenities and transport links to Stansted Aiport, M11 & A120. Whether you are looking to enjoy peaceful walks in nature or the vibrant community life, this property is perfectly situated to offer the best of both worlds.

This delightful home in Broxted is a rare find, combining spacious living with a serene environment. It presents an excellent opportunity for those seeking a family home in a desirable location. Do not miss the chance to make this beautiful house your new home.





- Substantial Five Bedroom Detached Country Home
- Approximately One & A Half Acres
- Tree Lined Gated Driveway
- Versatile Living Accommodation
- Kitchen/Breakfast Room With Utility Room
- Three Receptions & Study
- Conservatory
- En-Suite Facilities & Family Bathroom
- Surrounded By Beautiful Essex Countryside
- Transport Links Within Easy Reach

Entrance Hall

Entered via front door, double glazed windows to front aspect, Parquet flooring, power points, radiator, door leading to inner hallway, door to.

Kitchen/Breakfast Room

14'3" x 14'2" (4.34m x 4.32m)

Double glazed windows to multiple aspects, base and eye level units with complimentary working surfaces over & breakfast bar area, freestanding range cooker, inset 1 1/2 bowl sink with drainer unit, integrated dishwasher, integrated fridge/freezer, inset spotlights, power points, tiled flooring, door to dining room, door to.

Utility Room

Window to front aspect, base and eye level units with complimentary working surface over, space for washing machine, space for tumble dryer, tiled flooring, inset spotlights, power points, door to rear aspect leading to rear garden.

Separate Dining Room

14'1" x 9'9" (4.29m x 2.97m)

Parquet flooring, radiator, power points, double doors to.

Living Room

24'2" x 14' (7.37m x 4.27m)

Double glazed windows to multiple aspects, feature fireplace with inset wood burning stove, parquet flooring, radiator, power points, double doors to the conservatory, door to.

Study

17'6" x 10'5" (5.33m x 3.18m)

Double glazed windows to multiple aspects, parquet flooring, radiator, power points.

Conservatory

Windows to multiple aspects, parquet flooring, radiator, power points, French door leading to the rear garden.

Inner Hallway

Double glazed window to side aspect, inset spotlights, parquet flooring, radiator, built-in double storage cupboard, stairs rising to the first floor landing, door to lounge, door to playroom, door to.

Cloakroom

W.C, wash hand basin, parquet flooring, radiator.

Playroom

13'4" x 12' (4.06m x 3.66m)

Double glazed windows to multiple aspects, radiator, power points.





First Floor Landing

Double glazed windows to front aspect, radiator, power points, double doors to airing cupboard, doors to.

Principal Bedroom

14' x 13'3" (4.27m x 4.04m)

Double glazed windows to multiple aspects, radiator, power points, door to.

En-Suite

Double glazed Opaque window to rear aspect, enclosed bath with mixer taps & shower attachment, W.C, wash hand basin with vanity drawer below, walk-in oversized with rainfall head & additional attachment, heated towel rail, wall mounted vanity mirror, fully tiled, inset spotlights, extractor fan.

Bedroom Two

13'4" x 12' (4.06m x 3.66m)

Double glazed window to multiple aspects, radiator, power points.

Bedroom Three

14' x 9'1" (4.27m x 2.77m)

Double glazed window to multiple aspects, radiator, power points.

Bedroom Four

10'5" x 9'9" (3.18m x 2.97m)

Double glazed window to rear aspect, built-in single wardrobe, radiator, power points.

Bedroom Five

11'5" x 7'3" (3.48m x 2.21m)

Double glazed window to rear aspect, radiator, power points.

Family Bathroom

Double glazed opaque window to side aspect, enclosed P-bath with mixer taps & shower attachment, separate electric shower over, concealed cistern W.C, wash hand basin, heated towel rail, fully tiled, inset spotlights, extractor fan.

Grounds

To the rear of the property is a patio area leading to a formal lawn garden with a variety of mature trees & hedging. A gap in the hedge allows access to the orchard with a variety of fruit trees and additional lawn gardens. To the side of the orchard is a grass tennis court that is in need of renovation. The grounds measure approximately one and a half acres and are enclosed by mature hedging and fencing. To the front of the property is a generous lawn garden adjacent to the tree lined driveway.

Double Garage With Tree Lined Gated Driveway

To the side of the property is a double garage with two up & over doors, power, lighting, a pitched roof for storage and single door to the rear garden. Accessed via two five bar timber gates is a tree lined shingle driveway leading to the double garage and sweeping across the front of the property. The driveway provides parking for several vehicles.

